

Measurement of the anticancer agent gemcitabine and its deaminated metabolite at low concentrations in human plasma by liquid chromatography-mass spectrometry

Yan Xu^{a,*}, Bruce Keith^b, Jean L. Grem^b

^a Department of Chemistry, Cleveland State University, 2399 Euclid Ave., Cleveland, OH 44115-2406, USA

^b Gastrointestinal Malignancies Section, Cancer Therapeutics Branch, Center for Cancer Research, National Cancer Institute, Bethesda, MD 20889-5105, USA

Received 22 July 2003; received in revised form 17 November 2003; accepted 25 November 2003

Abstract

A liquid chromatography/mass spectrometry (LC-MS) method has been developed and validated for the determination of the anticancer agent gemcitabine (dFdC) and its metabolite 2',2'-difluoro-2'-deoxyuridine (dFdU) in human plasma. An Oasis[®] HLB solid phase extraction cartridge was used for plasma sample preparation. Separation of the analytes was achieved with a YMC ODS-AQ (5 μ m, 120 Å , 2.0 mm \times 150 mm) column. The initial composition of the mobile phase was 2% methanol/98% 5 mM ammonium acetate at pH 6.8 (v/v), and the flow rate was 0.2 ml/min. An isocratic gradient was used for 3 min, followed by a linear gradient over 4 min to 30% methanol/70% 5 mM ammonium acetate at pH 6.8. The gradient returned to the initial conditions over 2 min and remained there for 6 min. The retention times of dFdC, dFdU, and the internal standard 5'-deoxy-5-fluorouridine (5'-DFUR) were 11.46, 12.63, and 13.58 min. The mass spectrometer was operated under negative electrospray ionization conditions. Single-ion-monitoring (SIM) mode was used for analyte quantitation at m/z 262 for [dFdC-H]⁻, m/z 263 for [dFdU-H]⁻, and m/z 245 for [5'-DFUR-H]⁻. The average recoveries for dFdC, dFdU, and 5'-DFUR were 88.4, 84.6, and 99.3%, respectively. The linear calibration ranges were 5–1000 ng/ml for dFdC, and 5–5000 ng/ml for dFdU. The intra- and inter-assay precisions (%CV) were ≤ 3 and ≤ 7 % at three concentration levels (50.0, 500, and 5000 ng/ml). The limits of quantitation (defined as 10 times of signal-to-noise ratio) were 3.16 ng/ml for dFdC, and 1.35 ng/ml for dFdU with 50- μ l sample injections. This method has been used for measuring plasma concentrations of dFdC and dFdU in samples from adult cancer patients in a Phase I trial of weekly dFdC given as 150 (or lower) mg/m² 24-h infusion. The average plasma dFdC concentrations at 22- and 23-h into the infusion were 18.3 and 16.8 ng/ml at 150 and 100 mg/m², respectively; the values for dFdU averaged 2950 and 1372 ng/ml.

© 2004 Elsevier B.V. All rights reserved.

Keywords: Gemcitabine; 2',2'-Difluoro-2'-deoxyuridine

1. Introduction

Gemcitabine (Gemzar[®], Eli Lilly, Indianapolis, IN, USA; 2',2'-difluoro-2'-deoxycytidine, dFdC) is an analog of deoxycytidine (Fig. 1), which exhibits a broad spectrum of anti-neoplastic activity [1–3]. dFdC enters cells through nucleoside transporters, where it is phosphorylated to a 5'-monophosphate (dFdCMP) by deoxycytidine kinase in a rate-limiting reaction (Fig. 2). The subsequent phosphorylations by UMP/CMP monophosphate kinase and

nucleoside diphosphate kinase (NDK) generate the active 5'-diphosphate (dFdCDP) and 5'-triphosphate (dFdCTP) nucleosides. The cytotoxic effects of dFdC are attributed to the combined actions of dFdCDP, which inhibits ribonucleotide reductase, and dFdCTP, which is incorporated into DNA and results in chain termination [4]. dFdC is deaminated by cytidine deaminase to its inactive metabolite 2',2'-difluoro-2'-deoxyuridine (dFdU).

Clinically, dFdC is used to treat a wide variety of solid tumors, both as a single agent and in combination with other cytotoxic agents. As a single agent, it is most commonly administered intravenously weekly at dose of 1000 mg/m² by 30 min infusion. To measure dFdC and dFdU in plasma samples from cancer patients receiving dFdC with the usual

* Corresponding author. Tel.: +1-216-687-3991;

Fax: +1-216-687-9298.

E-mail address: y.xu@csuohio.edu (Y. Xu).

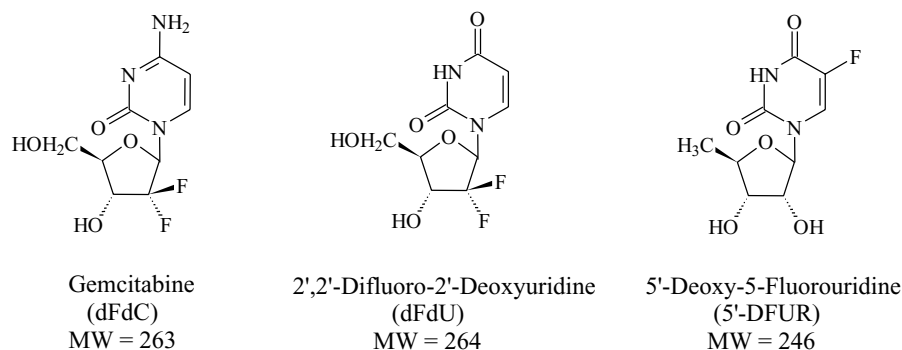


Fig. 1. The chemical structures of dFdC, dFdU and internal standard.

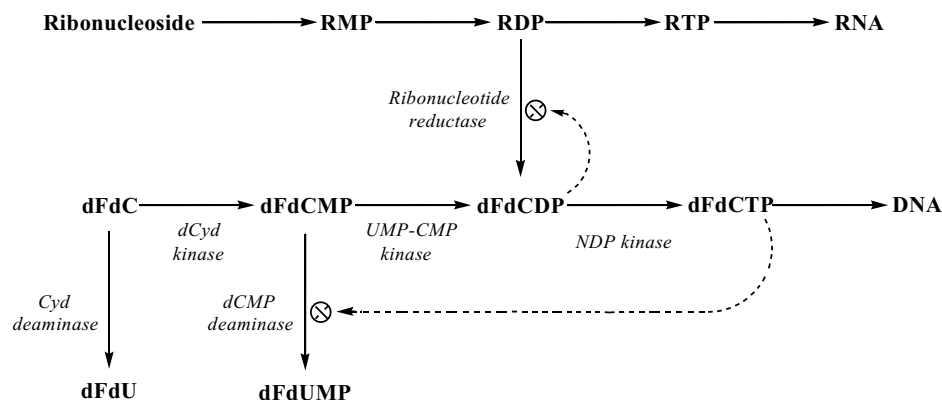


Fig. 2. Metabolism of gemcitabine.

dosing regimens, both normal-phase and reversed-phase liquid chromatography with ultraviolet detection (LC-UV) methods have been developed [5–8].

A Phase I trial of weekly dFdC given as 24-h infusion followed by a 24-h infusion of 5'-fluoro-2'-deoxyuridine (floxuridine, FUDR[®], Roche Laboratories, Nutley, NJ, USA) and oral calcium leucovorin was conducted in our clinic. This trial was implemented based on the following considerations: (a) the efficacy of dFdC is schedule dependent and continuous infusion is more effective than bolus injection in xenograft models [9]; (b) our studies showed that the administration of dFdC followed by 5-FU led to more than additive cytotoxicity and enhanced DNA damage in a human colon cancer cell line [10]; (c) the pharmacologic data revealed that dFdC has a very short half-life (median 8 min in one study) [7,8]; and (d) the conversion of dFdC to dFdCMP is saturable [11,12]. To ensure the tolerability of dFdC, patients received an initial cycle of dFdC as 24 h infusion weekly for 3 weeks out of four. A prior Phase II study of dFdC given as weekly 24-h infusion suggested that 180 mg/m² was the maximum tolerated dose [12]; the starting dose for our trial was 150 mg/m². If tolerated, FUDR and oral calcium leucovorin were added to the subsequent cycle.

Because the plasma concentrations of dFdC in the 24-h infusion study were anticipated to be below or near the limits of quantitation of the liquid chromatography (LC)-UV

methods, a more sensitive and specific analytical method was therefore needed. This work describes the development and validation of a liquid chromatography/mass spectrometry (LC-MS) method for the determination of dFdC and its deaminated metabolite dFdU in human plasma at low concentrations.

2. Experimental

2.1. Chemicals and solutions

Gemcitabine (dFdC) was supplied by the Cancer Therapy Evaluation Program at the National Cancer Institute (Bethesda, MD, USA). It was formulated by Eli Lilly as a lyophilized product containing the equivalent of 200 or 1000 mg gemcitabine (LY188011) as the hydrochloride salt. 2',2'-Difluoro-2'-deoxyuridine (dFdU) was provided by Lilly Research Laboratories (Indianapolis, IN, USA) through a material transfer agreement with the National Cancer Institute. The internal standard, 5'-deoxy-5-fluorouridine (5'-DFUR), was obtained from Sigma (St. Louis, MO, USA). Ammonium acetate was from Aldrich (Milwaukee, WI, USA). HPLC grade water and methanol were from Fisher (Fair Lawn, NJ, USA). Tetrahydrouridine (Lot No. 112907-J/22) was provided by the Drug Synthesis and

Chemistry Branch at the National Cancer Institute. Pooled donor plasma was provided by the Department of Transfusion Medicine, Warren G. Magnusen Clinical Center, National Institutes of Health (Bethesda, MD, USA).

A stock solution of ammonium acetate (100 mM, pH 6.8) was prepared by dissolving appropriate amounts of ammonium acetate in a known volume of HPLC grade water. Five millimolar ammonium acetate at pH 6.8 was prepared by 1:20 dilution of the stock solution with HPLC grade water.

Standard stock solutions of dFdC and dFdU (10.0 mg/ml), and the internal standard stock solution of 5'-DFCR (500 µg/ml) were prepared by dissolving appropriate amounts of compounds in known volumes of methanol. Standard mixture working solutions of dFdC and dFdU at the concentrations of 0.0500, 0.100, 0.500, 1.00, 5.00, 10.0, 20.0 and 50.0 µg/ml were prepared by mixing and serial dilutions of the stock solutions with methanol. The internal standard working solution (5.00 µg/ml) was prepared by 100-fold dilution of the stock solution with methanol.

2.2. Blank plasma, plasma standards and patient samples

Pooled donor plasma containing 1 µM tetrahydrouridine was used as the blank plasma in this study. To prepare plasma standards, 50 µl of standard mixture working solutions of dFdC and dFdU at each concentration level and 50 µl of internal standard solution (5'-DFUR, 5.00 µg/ml) were added to 1.5-ml centrifuge tubes (Marsh Bio Products Inc., Rochester, NY, USA). After the solutions were dried at 30 °C for 20 min in an Eppendorf Vacufuge™ (Brinkmann Instruments, Westbury, NY, USA), 500 µl of blank plasma was added to each tube. The resultant plasma standards (dFdC and dFdU) were at the concentrations of 5.00, 10.0, 50.0, 100, 500, 1000, 2000 and 5000 ng/ml with a fixed concentration of internal standard 5'-DFUR (500 ng/ml).

To prepare patient plasma samples, aliquots of 50-µl internal standard solution (5'-DFUR, 5.00 µg/ml) were added to 1.5-ml centrifuge tubes. After the solutions were dried at 30 °C for 20 min in the Eppendorf Vacufuge™, 500 µl of patient plasma was added to each tube.

The above blank plasma, plasma standards, and patient samples were subjected to solid phase extraction prior to the instrumental analysis.

2.3. Solid phase extraction

Oasis® HLB (3 cm³) solid phase extraction cartridges (Waters Corporation, Milford, MA, USA) were used for sample preparation. A 500 µl plasma sample containing 250 ng of internal standard was first diluted with an equal volume of calcium- and magnesium-free phosphate buffered saline (PBS, 1×, pH 7.4) (Invitrogen/Gibco, Grand Island, NY, USA). The Oasis® HLB cartridge was conditioned with 3 ml methanol and then 3 ml PBS. After loading the sample, the cartridge was washed with 2 ml PBS and dried with air. The analytes were eluted from the cartridge with

2 ml methanol. The eluate was collected in a glass tube (12 mm × 75 mm) and dried in the Eppendorf Vacufuge™ at 30 °C for 2 h. The residue was reconstituted in 500 µl HPLC-grade water and re-suspended. Reconstitution of the residue was carried out in 37 °C water bath for 5 min to insure complete hydration. After filtering with a GHP Acrodisc® syringe filter (0.45 µm × 13 mm) (Pall Gelman Laboratory, Ann Arbor, MI, USA), the solution was transferred to an autosampler vial (Waters, Part No. 186000326) for the instrumental analysis.

2.4. Instrumentation

The instrumentation system consisted of a Waters 2690 separations module, a Micromass Platform LC mass spectrometric detector (electrospray ionization mode (ESI)-MS) (Waters, Milford, MA, USA), and a personal computer station with MassLynx NT (Version 3.4) software (Micromass, Manchester, UK). The analytical column was a Waters YMC ODS-AQ™ (5 µm, 120 Å, 2.0 mm × 150 mm, Part # AQ12S051502WT) column, which was preceded by a SecurityGuard guard column (Part # KJO-4282) (Phenomenex, Torrance, CA, USA). The eluate from the analytical column was diverted to the ESI-MS and to the waste via a PEEK microvolume connector (Cat. # MT1XCPK) (Valco Instruments, Houston, TX) with a post-column split ratio of 1:2. The smaller flow went to the ESI-MS and the larger one to the waste. High pressure PEEK tubing was used for all connections. The tubing prior to the inlet of the analytical column was 1/16 in. o.d. and 0.01 in. i.d., and the tubing after the analytical column was 1/16 in. o.d. and 0.005 in. i.d.

2.5. Chromatographic conditions

The Waters 2960 separations module were operated under the following conditions: sample temperature, 4 (±1) °C; analytical column temperature, 30 (±10) °C; sample injection volume, 50 µl. A gradient elution method was used with two solvents: solvent A was 5 mM ammonium acetate at pH 6.8 and solvent B was HPLC-grade methanol. The initial composition of the mobile phase was 98% solvent A/2% solvent B (v/v). An isocratic gradient was used at 0.2 ml/min for 3 min, followed by a linear gradient over 4 min to 70% solvent A/30% solvent B. The gradient returned to the initial conditions by a linear gradient over 2 min and remained there for 6 min prior to the next injection. The analytical column was equilibrated with the initial separation conditions prior to the initial injection. The total run time for a LC-MS analysis was 15 min per sample.

2.6. ESI-MS detection

The mass spectrometer was operated in the negative electrospray ionization mode. It was tuned by the infusion of an analyte mixture (100.0 µg/ml each in 5 mM ammonium acetate, pH 6.8) with a Harvard syringe pump (Harvard

Apparatus, South Natick, MA, USA, Cat. No. 55–1111) at flow rate of 5.0 $\mu\text{l}/\text{min}$ via a 0.005 in. i.d. PEEK tubing. The tuning sample was converged with the incoming LC mobile phase (98% of 5 mM ammonium acetate at pH 6.8 + 2% methanol at a flow rate of 0.2 ml/min before the post-column split) in a sample tee prior to the MS detection. The optimized ionization conditions were: analytical vacuum, $<1.0 \times 10^{-4}$ mbar; nitrogen gas, 400 l/h; capillary, 3.00 kV; cone, -25 V (dFdC and dFdU), -35 V (5'-DFUR); ion source temperature, 140°C ; low- and high-mass resolution, 15.0; ion energy, 0.8 V; and multiplier, -650 V.

Full-scan spectra were acquired in the continuum mode over the mass range of 230–270 amu at a scan rate 200 amu/s. Single-ion-monitoring (SIM) mode was used for analyte quantitation by simultaneously monitoring quasi-molecular ions, m/z 245 for $[5'\text{-DFUR-H}]^-$, m/z 262 for $[\text{dFdC-H}]^-$, and m/z 263 for $[\text{dFdU-H}]^-$. Data acquisition was carried out with a dwell time of 0.50 s, a span of 0.00 Da, a repeat of 1, and an inter channel delay of 0.05 s. The cone voltages were 35, 25, and 25 for m/z 245, 262, and 263, respectively.

2.7. Data analysis

Micromass MassLynx NT (Version 3.4) software was used for acquisition of the LC-MS data, construction of the internal calibration curves, and derivation of the regression equations. The dFdC and dFdU concentrations in plasma samples were determined by the regression equations after obtaining the peak area ratios of the unknowns to the internal standard from their mass chromatograms.

The area under the curve (AUC) was determined by non-compartmental methods using a continuous intravenous infusion model with WinNonLinTM (Version 4.0) (Pharsight Corp., Mountain View, CA, USA). Clearance was calculated by dividing the dose rate by the steady-state.

2.8. Method validation

The recoveries were determined by comparing mean peak areas of the plasma samples prepared by spiking the blank plasma with known concentrations of dFdC, dFdU and 5'-DFUR to the mean the peak areas of the control samples prepared by spiking dFdC, dFdU and 5'-DFUR at the same levels in 5 mM ammonium acetate solution (pH 6.8). The intra- and inter-assay precisions were determined by analyzing the plasma samples with known concentrations of dFdC and dFdU within run and from different runs. The linearities of the calibration curves were assessed by the correlation coefficients. The limits of quantitation were calculated by 10 times of signal-to-noise ratio.

2.9. Patient blood sampling

Eight adult patients with advanced cancer were enrolled in an Institutional Review Board-approved Phase I trial involving dFdC as 24-h infusion weekly for three of 4 weeks. All

patients provided written, informed consent. Blood samples were collected prior to (0h) the infusion and at the steady state during the infusion (22- and 23-h) in 10-ml green-top heparinized Vacutainer[®] tubes (Becton Dickinson and Company, Franklin Lakes, NJ, USA) containing 10 nmol tetrahydrouridine as a cytidine deaminase inhibitor. The samples tubes were immediately placed on ice and centrifuged for 10 min at 800 g (4°C). The plasma was then transferred into three labeled Nalgene[®] cryogenic vials (Nalge Nunc International, Rochester, NY, USA) and stored at -70°C until analysis.

3. Results and discussion

3.1. ESI-MS detection

Fig. 3 shows the full-scan ESI mass spectra of dFdC, dFdU and internal standard 5'-DFUR, which indicated that detection of these compounds could be achieved by monitoring quasi-molecular ions $[\text{dFdC-H}]^-$ at m/z 262, $[\text{dFdU-H}]^-$ at m/z 263, and $[5'\text{-DFUR-H}]^-$ at m/z 245. Hence, these ions were selected for SIM detection in the subsequent quantitative analysis. Although, the difference of m/z between $[\text{dFdC-H}]^-$ and $[\text{dFdU-H}]^-$ was only by 1, the specificity of the method could be further secured by choosing the proper chromatographic conditions.

3.2. Chromatographic conditions

A YMC ODS-AQTM reversed-phase column and a gradient elution method were used for the separation of dFdC, dFdU and 5'-DFUR in human plasma. As shown in our previous studies [13], the column is well suited for the separation of nucleosides. In the current study, dFdC, dFdU and 5'-DFUR were completely resolved from each other and from endogenous compounds by the YMC ODS-AQTM column with retention times of 11.46, 12.63 and 13.58 min, respectively (Fig. 4).

3.3. Solid phase extraction and recovery of analytes

We had previously reported that liquid–liquid extraction with two sequential acetonitrile applications yielded the recovery of $\geq 70.0\%$ for dFdC, and $\geq 81.8\%$ for dFdU [6]. To simplify the procedure, the Waters polymer-based Oasis[®] HLB (3 cm^3) extraction cartridge was evaluated for plasma sample preparation. Using this preparatory method, the absolute recoveries of dFdC, dFdU and internal standard 5'-DFUR from human plasma were found to be ≥ 86.8 , 82.2 and 97.5%, respectively (Table 1), and the recovery data were rather consistent throughout the concentration range studied (50.0, 500, 5000 ng/ml). As compared with our liquid–liquid extraction procedure, the solid-phase extraction with Oasis[®] HLB cartridge is simple, easy to handle, and highly reproducible.

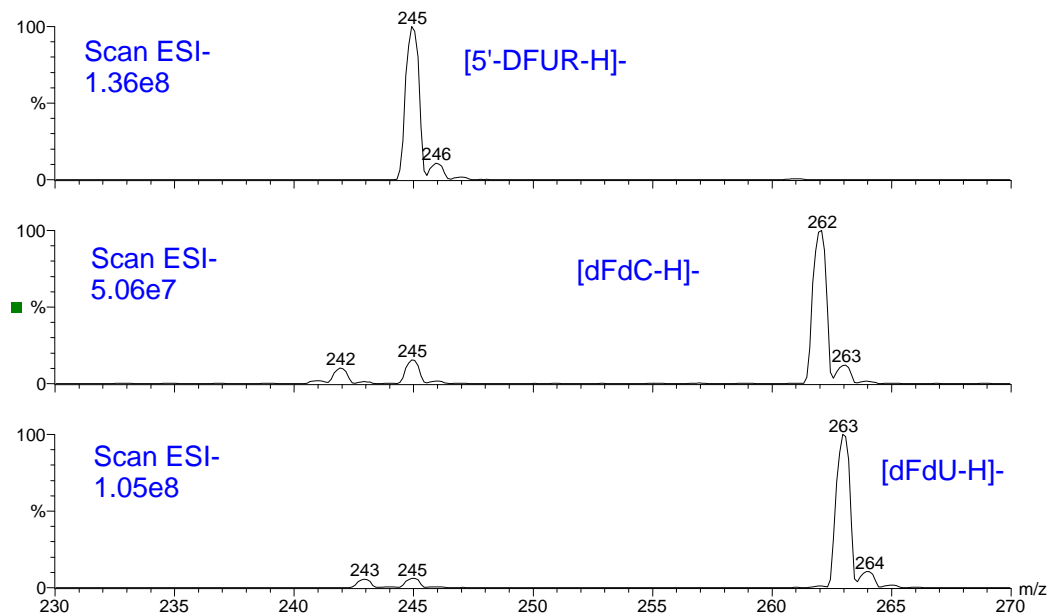


Fig. 3. The full-scan mass spectra of dFdC, dFdU and 5'-DFUR (I.S.). Experimental conditions were described in Section 2.6.

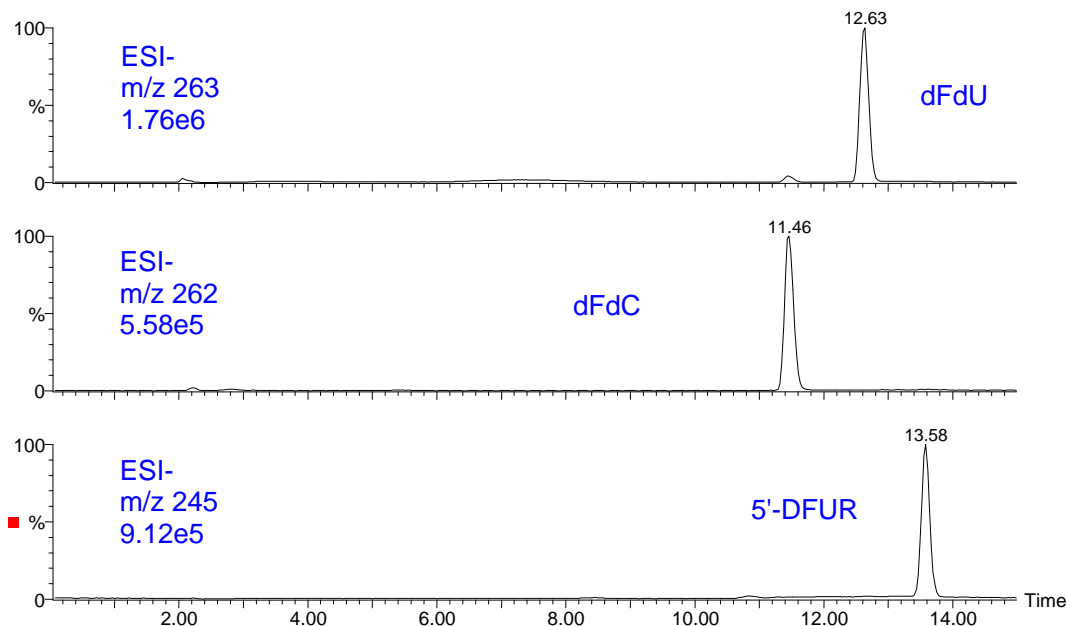


Fig. 4. Representative SIM chromatograms of dFdC, dFdU and 5'-DFUR in human plasma. Experimental conditions were described in Sections 2.5 and 2.6. Analyte concentration: 500 ng/ml.

Table 1
Recovery of dFdC, dFdU and I.S. in human plasma (n = 3)

Analyte	50 (ng/ml)		500 (ng/ml)		5000 (ng/ml)	
	% Recovery	%CV	% Recovery	%CV	% Recovery	%CV
dFdC	89.0	7	89.4	2	86.8	0.5
dFdU	84.6	1	82.2	2	86.9	0.6
I.S. ^a	102	1	98.3	3	97.5	6

^a I.S. (5'-DFUR) is at the fixed concentration of 500 ng/ml.

3.4. Intra- and inter-assay precision

The intra- and inter-assay precisions of the method were determined by analyzing blank plasma samples spiked with known concentrations of dFdC and dFdU (50.0, 500, 5000 ng/ml). Three replicates were analyzed at each concentration level within a single run and from runs performed on three different days. The results for dFdC and dFdU, as well as 5'-DFUR, in human plasma were shown in Table 2. The percent coefficients of variation (%CVs) for dFdC,

Table 2
The intra- and inter-assay precision of plasma samples ($n = 3$)

Analyte	50.0 (ng/ml)			500 (ng/ml)			5000 (ng/ml)		
	Peak area	S.D.	%CV	Peak area	S.D.	%CV	Peak area	S.D.	%CV
Intra-assay									
dFdC	11173	31	0.3	103912	1742	2	900129	2677	0.3
dFdU	42502	412	1	313349	2769	0.9	1952863	12551	0.6
I.S. ^a	117098	1064	0.9	109613	3723	3	125194	626	0.5
Inter-assay									
dFdC	12101	796	7	103394	2059	2	892685	4512	0.5
dFdU	42394	403	1	310931	5813	2	1950760	11800	0.6
I.S. ^a	118517	1605	1	113374	2912	3	125538	700	6

^a I.S. (5'-DFUR) is at the fixed concentration of 500 ng/ml.

dFdU and 5'-DFUR were $\leq 3\%$ for the intra-assay analyses and $\leq 7\%$ for the inter-assay analyses.

3.5. Linear calibration range

The linear relationships were found between the peak-area ratios of dFdC and dFdU to internal standard 5'-DFUR over the concentration range 5–1000 ng/ml for dFdC, and 5–5000 ng/ml for dFdU. The typical regression equations were $Y = (0.001815)X - 0.000311$ for dFdC, and $Y = (0.004306)X + 0.033209$ for dFdU with correlation coefficients ≥ 0.998 for both dFdC and dFdU.

3.6. Sensitivity and limits of quantitation

Fig. 5 shows the detection sensitivity during SIM for dFdC and dFdU. The signal-to-noise ratio by root mean square for 0.5 ng dFdC and dFdU were equal to 32 and 74. The limits of quantitation were 3.16 ng/ml for plasma dFdC and 1.35 ng/ml for plasma dFdU with 50- μ l sample injections. These limits of quantitation were at least 15–37 times lower than those of the LC-UV methods [5,6].

3.7. Clinical and pharmacokinetic results

The validated assay was used to determine plasma concentrations of dFdC and dFdU in a Phase I trial of weekly dFdC given as 24-h infusion followed by 24-h infusion of

FUDR. The first three patients received a starting dose of 150 mg/m² dFdC. As none of these patients could tolerate more than two weekly doses due to grade 2 mucositis and grade 3 fatigue (one patient) or grade 3 thrombocytopenia (two patients), the dose was decreased to 100 mg/m². At the lower dose, one patient withdrew from the study after receiving a single dose for personal reasons; another patient experienced small bowel obstruction due to tumor requiring surgical bypass and received only one dose. One patient experienced grade 4 neutropenia after two doses of dFdC, but tolerated the subsequent cycle at a reduced dose of 60 mg/m². Two patients received all three weekly doses, but experienced grade 3 neutropenia that required a dose reduction to 80 mg/m² for the second cycle. The toxicity observed with the 24-h infusion was felt to be prohibitive, and this schedule was abandoned.

The pharmacokinetic parameters of dFdC and dFdU from eight patients receiving their initial 24-h dFdC infusion are summarized in Table 3. There were no significant differences on the average plasma concentrations (C_p) between the values of 22- and 23-h infusion, which were consistent with achievement of steady-state concentrations. The average C_p for dFdC during cycle one for 150 and 100 mg/(m² 24 h) were 18.3 and 16.8 ng/ml, respectively, while the average C_p for dFdU were 2950 and 1372 ng/ml. The ratios of dFdU to dFdC in the 24-h dFdC infusion study were much greater than those we previously determined with shorter infusion times of 1- and 2-h [6]. The area under the curve (AUC_{last})

Table 3
The pharmacokinetic parameters of dFdC and dFdU during initial gemcitabine infusion

Gemcitabine (mg/(m ² 24 h))	Patients	Average \pm S.D.						Ratio dFdU to dFdC ^a	Median clearance (ml/(min m ²))
		AUC_{last} (μ g/(ml min))		C_p (ng/ml)					
		dFdC	dFdU	dFdC		dFdU			
				22 h	23 h	22 h	23 h		
150	3	12.1 \pm 2.9	2020 \pm 399	19.9 \pm 4.4	16.7 \pm 4.7	2845 \pm 558	3055 \pm 781	160.9 \pm 11.5	5961 (25%, 3988; 75%, 8703)
100	5	10.3 \pm 5.8	916 \pm 333	16.0 \pm 9.0	17.6 \pm 10.4	1266 \pm 438	1477 \pm 590	128.0 \pm 90.9	

^a The 22- and 23-h values for dFdC and dFdU were averaged before calculating the ratio.

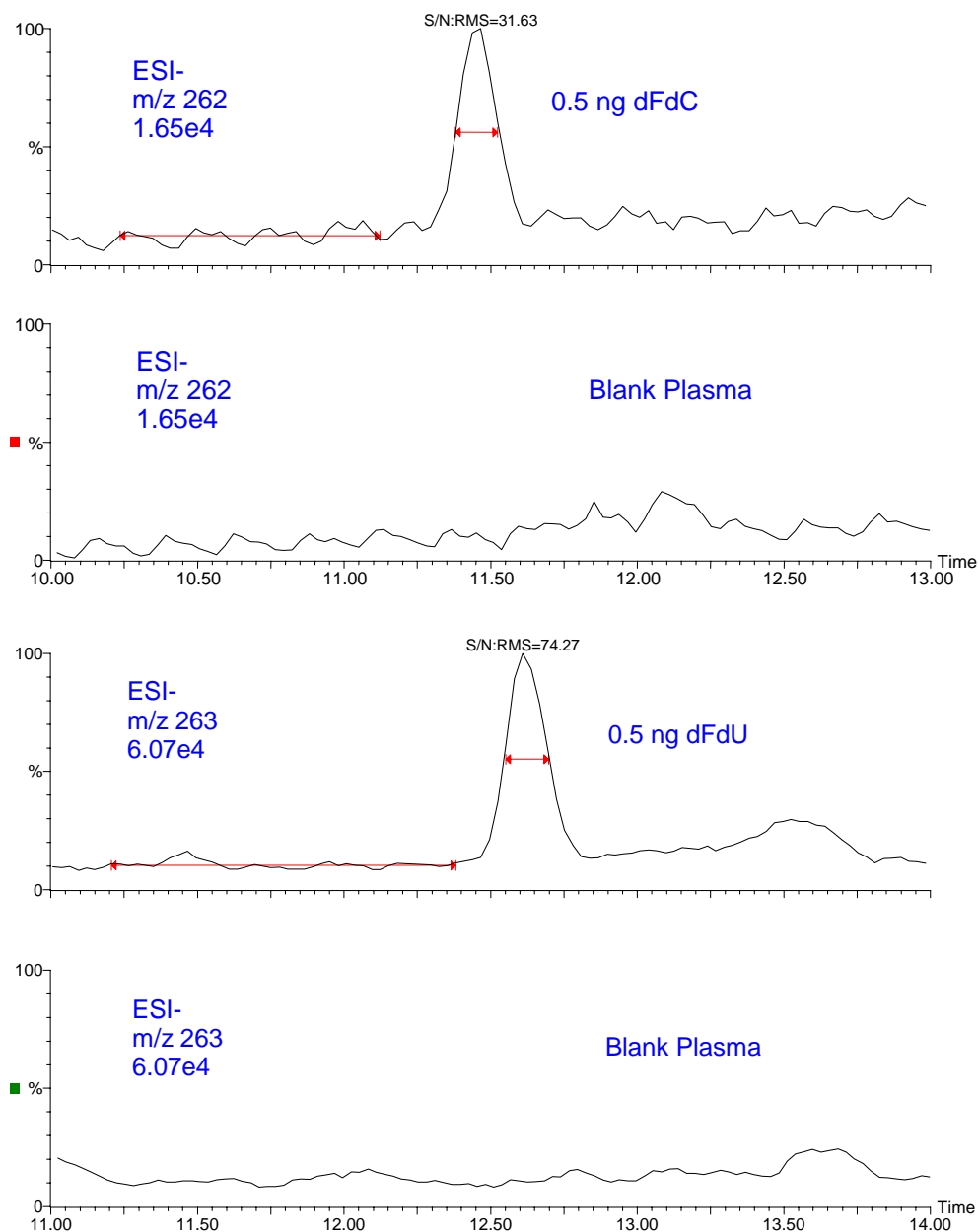


Fig. 5. The SIM chromatograms of blank plasma and plasma spiked with known concentrations of dFdC and dFdU. Experimental conditions were the same as in Fig. 4. Analyte concentration: 10 ng/ml; injection volume 50 μ l; 0.5 ng injected.

at dose levels of 150 and 100 mg/(m² 24 h) were 12.1 and 10.3 μ g/(ml min) for dFdC, and 2020 and 916 μ g/(ml min) for dFdU. The medium clearance was 5961 ml/(min m²).

4. Conclusions

An LC-MS method has been developed and validated for the determination of dFdC and dFdU at low concentrations in human plasma. This method uses solid-phase extraction for plasma sample preparation, reversed-phase LC for analyte separation, and electrospray ionization mass spectrometry

for analyte quantitation. It employs an internal standard for calibration and offers shorter chromatographic separation time (15 min), and improved limits of quantitation for plasma dFdC and dFdU. This method has been proven useful in a Phase I trial of weekly dFdC given as 24-h infusion, where the concentrations of dFdC were lower than or near the limits of quantitation of the LC-UV methods. Although we do not recommend further evaluation of the 24-h infusion schedule of gemcitabine, this LC-MS method offers advantages over the LC-UV methods in terms of shorter run times and greater sensitivity, and may prove useful in the analysis of limited volume biological samples and tissue pharmacokinetics.

Acknowledgements

Dr. Yan Xu's one-year sabbatical at the National Cancer Institute was funded through an Interagency Personnel Agreement between the National Cancer Institute and Cleveland State University.

References

- [1] V. Heinemann, Y.Z. Xu, S. Chubb, A. Sen, L.W. Hertel, G.B. Grindey, W. Plunkett, *Mol. Pharmacol.* 38 (1990) 567.
- [2] B.J.M. Braakhuis, G.A.M.S. van Dongen, J.B. Vermorken, G.B. Snow, *Cancer Res.* 51 (1991) 211.
- [3] S. Noble, K.L. Goa, *Drugs* 54 (1997) 447.
- [4] J.L. Grem, B. Keith, in: M.R. Alison (Ed.), *Cancer Handbook*, Macmillan Press, London, 2002, p. 1271.
- [5] K.B. Freeman, S. Anliker, M. Hamilton, D. Osborne, P.H. Dhahir, R. Nelson, S.R.B. Allerheiligen, *J. Chromatogr. B* 665 (1995) 171.
- [6] B. Keith, Y. Xu, J.L. Grem, *J. Chromatogr. B* 785 (2003) 65.
- [7] J.L. Abbruzzese, R. Grunewald, E.A. Weeks, D. Gravel, T. Adams, B. Nowak, S. Mineishi, P. Tarassoff, W. Satterlee, M.N. Raber, W. Plunkett, *J. Clin. Oncol.* 9 (1991) 491.
- [8] A.P. Venook, M.J. Egorin, G.L. Rosner, D. Hollis, S. Mani, M. Hawkins, J. Byrd, R. Hohl, D. Budman, N.J. Meropol, M.J. Ratain, *J. Clin. Oncol.* 18 (2000) 2780.
- [9] G. Veerman, V.W. Ruiz van Haperen, J.B. Vermorken, P. Noordhuis, B.J. Braakhuis, H.M. Pinedo, G. Peters, *Cancer Chemother. Pharmacol.* 38 (1996) 335.
- [10] Q.F. Ren, V. Kao, J.L. Grem, *Clin. Cancer Res.* 4 (1998) 2811.
- [11] R. Grunewald, J.L. Abbruzzese, P. Tarassoff, W. Plunkett, *Cancer Chemother. Pharmacol.* 27 (1991) 258.
- [12] V. Heinemann, Y.Z. Xu, S. Chubb, A. Sen, L.W. Hertel, G.B. Grindey, W. Plunkett, *Cancer Res.* 52 (1992) 533.
- [13] Y. Xu, J.L. Grem, *J. Chromatogr. B* 783 (2003) 273.